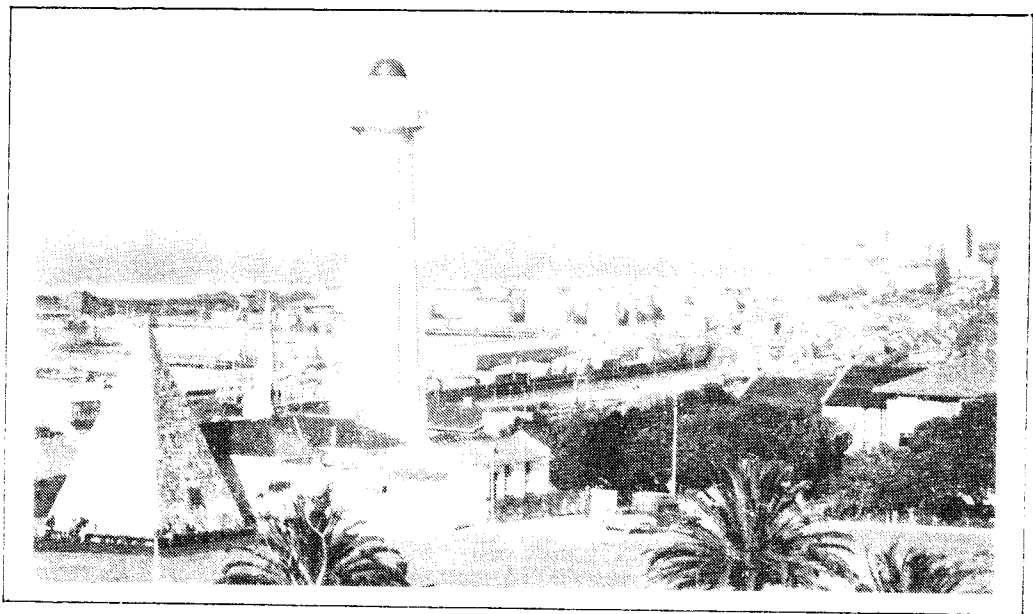




Q S X  
P E



THIS NEWSLETTER IS PUBLISHED BY THE  
PORT ELIZABETH BRANCH OF THE SOUTH  
AFRICAN RADIO LEAGUE.

P.O. BOX 10402  
LINTON GRANGE  
6015



P O R T      E L I Z A B E T H      B R A N C H  
COMMITTEE

CHAIRMAN	Marge Weller	ZS2OB	30-4597
VICE CHAIRMAN	Brian Weller	ZS2AB	30-3498
SECRETARY (Minuting)	Dick Schonborn	ZS2RS	55-2244
SECRETARY (Corres)	Colin Ashwell	ZS2AO	31-2471
TREASURER	Colin Robertson	ZS2CTR	30-0570
RALLIES/SOCIAL	Beavan Gwilt	ZS2RL	30-6968
SPECIAL EVENTS	Dick Schonborn	ZS2RS	55-2244
AWARDS	Bill Hodges	ZR2AAN	51-2580
HAMNET	Al Akers	ZS2U	30-2983
EDITOR - QSX-PE	Marge Weller	ZS2OB	30-4597
REPEATER WORKING			
GROUP - CHAIRMAN	Trevor Scarr	ZS2AE	32-1746
LIBRARIAN	Colin Ashwell	ZS2AO	31-2471
PACKET WORKING	Lionel Coombe-		
GROUP CO-ORDINATOR	Davis	ZS2DD	32-1770

BULLETIN ROSTER

DATE	COMPILER	40m NET	2m NET
12 November	Al ZS2U	ZS2U	ZS2AO
19 November	Marge ZS2OB	ZS2OB	ZR2AAN
26 November	Brian ZS2AB	ZS2AB	ZS2RL
3 December	Dick ZS2RS	ZS2RS	ZR2AAN

There will be a relay on 14,135MHz by ZS2DD

SUNDAY BULLETIN INFORMATION

Primary Frequencies for bulletins at approximately 08.40a.m.  
H.F. 7098 kHz in 40 metre band. VHF 145,650 MHz - Town Repeater

BULLETIN UPDATE

7.30p.m. - 3695 kHz in 80 metre band - relay on 145,700 MHz,  
with automatic relay on 51,400 MHz - VHF news from ZS2FM.

BRANCH V.H.F. SERVICES PROVIDED

Town Repeater (P.E. Central)	145,050 / 145,650 MHz
Grahamstown Repeater	145,150 / 145,750 MHz
Ladys Slipper Repeater	145,100 / 145,700 MHz
6 meter link with above	51,400MHz (simplex)
Cockscomb Repeater	145,000 / 145,600 MHz
Kareedown Repeater	145,075 / 145,675 MHz
University Repeater	145,175 / 145,775 MHz
6 meter beacon (ZS2SIX CW Id)	50,005 MHz
2 meter beacon (ZS2PE CW Id)	144,910 MHz

\*\*\*\*\* WE LIKE BEING YOUR BRANCH \*\*\*\*\*

# NOTICE OF MEETING

Members are reminded that the next General Meeting of the Branch will be held at St. Martins Church, Kabega Park, on Friday 17th November, 1989 at 8.15p.m.

## THIS AND THAT

### WELCOME

To Peter Tomlinson ZS2OF and George Middleton ZS2KG who have joined the Branch as Social Members. We hope you have a long and happy association with us.

### CONGRATULATIONS

To Wolf ZS2WG and Kathy Gerstle who became grandparents for the first time recently. May the baby bring you all lots of joy and happiness.

### THANKS

To Mike Poulter ZR2LM who has donated a VHF rig to the Branch for use with the new Packet Bulletin Board System. This is being attended to and all the rigs sorted out by Lionel ZS2DD and Wolf ZS2WG prior to being set up at Lady's Slipper Repeater Site. It is hoped to also set up a Digi-peater at the Grahamstown repeater site, so that the Bulletin Board can be accessed by most of the Eastern Cape operators.

### REPEATERS

It has been decided that the repeaters which need to be updated will be attended to as soon as possible. The crystal filter for the Town Repeater has arrived and will be installed soon and we hope that this will alleviate some of the interference problems which are being experienced. We also envisage a trip to Grahamstown for a major overhaul, including antenna poles, painting, etc., and this will hopefully take place over the first weekend in February. So make your plans now, get your caravans etc. ready, and keep tuned in for further details.

MINUTES OF GENERAL MEETING OF PORT ELIZABETH BRANCH OF  
S.A.R.L. HELD 20TH OCTOBER, 1989 AT ST. MARTINS CHURCH.

PRESENT: 28 members and visitors.

APOLOGIES: 8 members

The Chairman welcomed all to the meeting especially Kevin ZS2KE whom we hadn't seen for too long!

MINUTES: The Minutes of the Meeting held in August, having been published and circulated in QSX-PE were taken as read, proposed by ZS2MM and seconded by ZS2AB.

ARISING: (1)The question of QSL cards was discussed. Marge read a letter from Raphy ZS2SP re the cost of the cards we have proposed getting from the Publicity Association. There had obviously been some incorrect information and the new costs were prohibitive. Raphy gave the meeting a resume of the QSL card situation to date. It was suggested that a standard card be purchased and each amateur have his call sign overprinted. Fred ZS2JS felt that QSL cards were an individual item and most amateurs wanted their own design. Further quotes would be obtained on a card similar to ZS2PE  
(2)Volunteers were called for the answer QSL cards for the Field Day operations. With regard to the last Field Day, the Branch has obtained 76092 points.

FINANCE: The Treasurer tabled the financial situation to date, and this was very healthy.

CORRES: HQ bulletins and Branch newsletters were set out and were available to all.

GENERAL: (1)JOTA was due to take place on Saturday 21st October. It was restricted to one day only and the station would be situated at Redhouse. The Branch had only just been informed of the site and time, etc. Al ZS2U had kindly offered the use of his multi-band antenna and pole. In the past years, it had been very enthusiastically organised by Tiny Packwood with much success. In view of the short notice, there were no volunteers to take charge of the station.

(2)The proposed League tie was discussed.

(3)REPEATERS: Trevor ZS2AE was asked if there was any news on repeaters. He stated that the Repeater Working Group had not been reconstituted. Trevor would attend the next Committee meeting.

(4)PACKET RADIO: Lionel ZS2DD reported that a rig had been obtained and should be operational shortly.

(5)HAMNET: Al ZS2U said that the closing date for nominations for Regional Co-Ordinator was 30th October.

(6)Motions for the AGM to be held next year must be at Headquarters by 30th November. Garth ZS2HB asked what the members financial commitment was should the League become insolvent. The Chairman read Rule 5 and 6 of the constitution.

(7)The meeting wished Basil Paul good luck in the forthcoming Radio Amateur exam.

(8)Raphy ZS2SP read a letter he had written to his brother many years ago, whilst he was still at school. It was of historical interest as it involved their radio receiver and a little 'pirating'!

(9)Extracts from the Post Office Bulletin were read and members were told they could receive updates from the Post Office regularly for no charge.

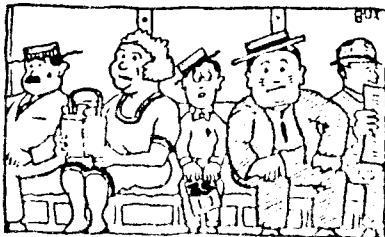
(10)A mobile HF antenna was offered for sale. Members were asked to submit written offers.

After the business of the meeting, Al ZS2U gave the first of our short talks. He gave a demonstration and talk on Super conductors which was very interesting and informative

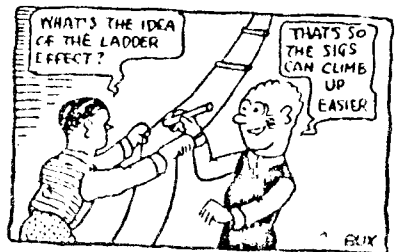
Thereafter tea was taken.

Sgd: M.T. Weller ZS2OB  
Chairman

Sgd: R.W. Schonborn ZS2RS  
Secretary



A HAM SANDWICH



THE ZEPPELIN ANTENNA

## HAMNET NEWS

In a previous article OM Al ZS2U described how and when the Amateur Radio operator fits into the networks assisting with communications in emergencies. We do not believe that the emergency corps of Radio Amateurs need be a high-powered, highly tuned organisation but we do feel that an overall umbrella organisation is essential. This, to form a backbone and provide the basic training needed by operators to handle emergency traffic. It must be remembered that third party traffic cannot simply be carried by all and sundry during an emergency. The initial contacts are made by whoever is first on the scene and he then activates the network.

This initial activation has always proved difficult to achieve, but as Radio Amateurs become better known to the authorities who are able to use their help, contact with them will be facilitated. To this end the controllers of SATEPSA have included information regarding all Radio amateurs in their Emergency Communication Handbook. The essential for each and every radio amateur interested in assisting in emergencies is to know just where he can fit in and who he should have contact with.

An excellent guideline to participation is, whenever a disaster is at hand, to listen in and call on the regular Hamnet HF net frequencies of 7070 and 3695 KHz, and offer your services. It must be considered essential by each and every radio amateur to be able to offer his or her services as a communicator when it may be required.

Further the expansion of exercises and nets will help to keep the amateur radio bands active to a greater extent. In modern times there are many organisations, looking with greedy eyes upon the tracts of radio spectrum used by radio amateurs. Big business in broadcasting and professional radio services would dearly like to take over the amateur bands. The expanded use of these bands for community use by radio amateurs will help to keep at bay those with designs on our bands.

Ken Victor  
2320C

## HAMNET SIMULATED EMERGENCY CONTEST.

The contest is open to all radio amateurs in the Republic of South Africa, the Homelands, Namibia, Swaziland, Lesotho and Botswana and only contacts with stations in these countries will count.

The contest will take place on Sunday 11th March, 1990 from 1400 to 1700 S.A.S.T. and operation will be confined to the 40 metre band and SSB. Power limitations will be as per regulations and no linears will be allowed.

Antennas are limited to non gain antennas with reference to a dipole.

Stations may not be housed in any permanent building or structure and antenna support points may not be from permanent structures and/or buildings.

Stations must operate from the same site for the duration of the contest.

Equipment may only be erected on the day of the contest.

Power sources must be independent of the mains supply, i.e. batteries or generators.

Serial numbers to be exchanged will be the normal report plus a serial commencing with 001.

There will be 13 zones: ZS1, ZS2, ZS3, ZS4, ZS5, ZS6, H5, S4, S8, V9, 3D, 7P and A2.

There will be two categories: single operator portable and multi-operator portable (maximum of 5 operators)

Scoring:

Contact with a fixed station in your zone will score 1 point

Contact with a fixed station outside your zone will score 2 points

Contact with a portable/mobile station in your zone will count 3 points

Contact with a portable/mobile station outside your zone will count 4 points.

Multipliers:

Points scored will have a power multiplier of 1 for power over 50 watts output, 2 for power output between 10 watts and 50 watts and 3 for power output under 10 watts.

There will be a multiplier of the number of zones contacted.

Logs should be sent to Hamnet Simulated Emergency Contest, P.O. Box 10402, Linton Grange, 6015.

Logs must show time of contact, callsign of station contacted and reports sent and received. Also furnish details of station, such as power used, rig and antenna. Also names and callsign of operators and station call. The operating location must also be supplied.

The closing date for entries will be 31st March, 1990.

FOR SALE by Bill Browne ZS2BY

- 1) HAM 4 Rotator (unused) R1500
  - 2) CUSHCRAFT A3 Triband beam (1Kw rated) (unused) R1000
  - 3) HIGH VOLTAGE TRANSFORMERS:
    - a) PARMEKO Primary: 230v 50 hz  
Secondaries: 1) 620-550-375-0-375-550-620v  
200-200-250 250-200-200 mA  
2) 5v 3A 3) 5v 3A  
(This unit is sold subject to passing insulation tests)
    - b) ADMIRALTY TYPE Primary: 200-250v 50hz  
Secondary: 1060-960-860-760-0-760-860-960-1060v  
125 mA
    - c) THORDARSEN Filament transformer. Primary 210-230v  
Secondaries: 1) 6,3v 3A; 2) 5v 3A; 3) 2,5v 3,5A
  - 4) GONSET phone-patch unit. Quite fancy unit!
  - 5) 3 only TTL6 valves (equiv. 4-125a)
  - 6) 2 only bases for TTL6.
- Contact Bill at home on (041) 31-3343



## IN DEFENCE OF FM ON VHF.

This article is based on an interview between Hans van de Groenendaal ZS6AKV and Mike Bosch ZS2FM which was recently transmitted on Radio Mirror.

Q. With all the 6 metre activity right now, the question arises, "Is there still a future for FM on six metres", I recently asked Mike ZS2FM to comment?

A. Yes. Hans, most certainly. All modern amateur transceivers are now equipped with the FM mode. But first of all, I would like to put on record that I am fully aware of the advantages and disadvantages of both the SSB and FM systems and do appreciate the merits of single sideband during weak signal conditions. Having said that, I now would like to put my case for the defence of FM on VHF.

In South Africa there are far more 6 metre amateurs equipped with inexpensive FM transceivers such as the ex-military type C42 or crystal-controlled low band commercial rigs. Most of these amateurs would like to work long distances too as well as operate on SSB. But unfortunately many cannot afford the high price of modern all mode six metre equipment currently available in this country. Therefore, I personally feel that these amateurs should be encouraged to operate FM in their part of the spectrum and thus help to occupy this VHF band.

Q. What about the question of RFI, does FM cause more interference than SSB?

A. Well, as long as the FM operators keep to the all mode segments of the band, i.e. above 50,400 MHz and with narrow band deviation of  $\pm 3$  KHz or operate wide deviation in the channels between 51,4 to 51,6 MHz, then no one could object to it. However, they should under no circumstances transmit FM below 50,400 MHz i.e. inside the SSB and CW channels. Furthermore, it is a known fact that FM causes less TVI than SSB.

Q. Mike, let us now talk a bit about range. Is there a difference between SSB and FM, does SSB have a further range than FM?

A. Country-wide operation is possible with both systems throughout the year during band openings. For example, Div. 2 stations have already made many FM contacts with Div. 6 via Sporadic E, Tropo and Meteor Scatter propagation. Recently, Owen ZS2HZ of Port Elizabeth worked Kosie ZS3E of Outjo during a Sporadic E opening, not only on an all mode rig but also on his C42. (A recording made by Owen of Kosie's signal demonstrating SSB versus FM, was inserted here).

Q. I can certainly hear the difference between the FM signal and the SSB signal - FM having much better quality, but can one work DX on FM?

A. Most definitely! During a good F2 opening, even a standard C42 with a suitable beam antenna would do the trick, but of course with narrow band deviation. Last year Etienne ZS6CE became the first South African amateur to work a six metre DX station on FM when he hooked up with SV1DO. Since then several South African amateurs have made FM DX contacts. There should be enough DX stations around during a major F2 opening to give everyone a contact.

Q. Mike, in Port Elizabeth I believe you have a two-to-6 metre repeater. What is the purpose of this?

A. The Port Elizabeth branch has installed this type of repeater system for the benefit of all 2 and 6 metre FM operators and thus provided them with the means of working each other cross-band over long distances. The 2 metre FM operator could have a real field day when F2 openings occur which would make it possible for him to work some real 2 metre DX. For instance, on 10 metres there are many FM repeaters above 29,500 MHz which are very popular with American and European DX stations.

Currently there are two of these simplex repeaters in operation in South Africa, one in Cape Town and the other in Port Elizabeth, and both are on the same simplex frequency of 51,400 MHz. The Port Elizabeth repeater emits a horizontally polarized signal and is linked to a 2 metre repeater on 145,700 MHz which is located on Lady Slipper mountain. Hal ZS6WB has already worked a number of 2 metre stations on FM via the Cape Town and Port Elizabeth simplex

repeaters. I had the pleasure of working Tom ZS3AT of Windhoek through our Port Elizabeth repeater. This particular repeater has provided us with a lot of fun, and many contacts have been logged with Pretoria, Johannesburg, East London and surrounding towns.

Q. Mike, we hear a lot about the mediocre equipment that is being used on 6 metre FM. Do we really get the results and what are your final comments?

A. Yes Hans, there is one final point I would like to stress. It appears that there is a misconception of the FM mode in this country. When SSB operators work FM with their linear amplifiers, they are compelled to reduce power since their power supplies etc. cannot handle a 100% duty cycle. Coupled with this is the lack of front end low noise amplification which is so essential for the FM mode. No wonder that such mediocre results are often obtained on FM!

What is not generally known is the fact that there is a cross-over point below which SSB excels, but as soon as the signal level increases above this point then FM reception rapidly improves and becomes superior. An efficient FM receiver could reach this point at a fairly low signal level usually with a signal strength less than S2. Now here is a tip for those who are only equipped with 2 or 6 metre FM transceivers including C 42s. Just fit a GaAsFET pre-amplifier to the front end of your FM receiver and the results will astound you!.

(In conclusion a tape recording was played which was made in France by F5QT of the reception of several Division 6 stations on FM). So 6 metre DX is really possible. Thanks to Mike Bosch ZS2FM for his comment. You have been listening to Radio Mirror.



**Instant Printing**

9 ST. PATRICK'S ROAD  
PORT ELIZABETH  
6001



TELEPHONE 27614

FOR ALL YOUR COMMERCIAL PRINTING REQUIREMENTS

TRY US FOR YOUR OSL CARDS!



# PETERSEN & SMITHIES

**THE Engine Rebuilders**  
Specialists in Veteran car engines.

3 HANCOCK STREET, NORTH END

☎ 041-543669/0

ASK FOR LEO SMITHIES

# HENROSE PRODUCTS (PTY) LTD (EDMS) BPK

MANUFACTURERS OF PLASTIC BAGS  
PRODUCERS OF FRUIT JUICES  
"ORANG-U-TANG"  
AND "LEKKA LIKS" FROZEN SUCKERS

VERVAARDIGERS VAN PLASTIEKSASSE  
VERVAARDIGERS VAN VRUGTE SAPPE  
"ORANG-U-TANG" EN  
"LEKKA LIKS" VERVRIESTE YSBLOKKE

TEL. 546470

57 EDGAR LANE

NORTH END

PORT ELIZABETH, 6001

# COMPUTER TECHNICAL ENGINEERING

Division of Slimwell Slimming Club CC

## POSTAL ADDRESS

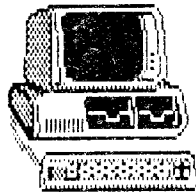
P.O. Box 10317  
Linton Grange  
6015


## REGISTERED OFFICE

25 Olive Schreiner Avenue  
van der Stel  
PORT ELIZABETH

Telephone: (041) 30-4597  
(Answering Machine available)

Registration No.  
CK88/13270/23





**E.P. MUFFLERS**

EXHAUST FITTING AND PIPE BENDING  
SPECIALISTS AND MANUFACTURERS

ALSO:  
TOWBARS  
BATTERIES  
SHOCK  
ABSORBERS

MILD STEEL  
FULLY  
GUARANTEED

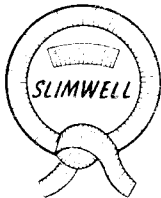


ALSO IN  
GRAHAMSTOWN  
(0461) **28448**  
511 WASE STREET

**545420**

29 EMBASSY STREET, NORTH END, P.E.

# SLIMWELL Slimming Club CC



Registered Office:  
25 Olive Schreiner Avenue  
Port Elizabeth  
Telephone: (041) 30-4597

*The EASIER, HEALTHIER way  
to lose and maintain weight.*

Registration No. CK 88/13270/23

Express Number plates  
& 'SIGNS'

INC.  
**FLEKTI-PLATE**

PTY. LTD.

Tel 54 2834 / 54-1501 / 54 1652

23a De Villiers St

PO Box 2587

Port Elizabeth

North End 6056